

# MONTHLY MEMBERSHIP PROGRESS REPORT

District 321A2

Results as of: 6/30/2020

GMT:

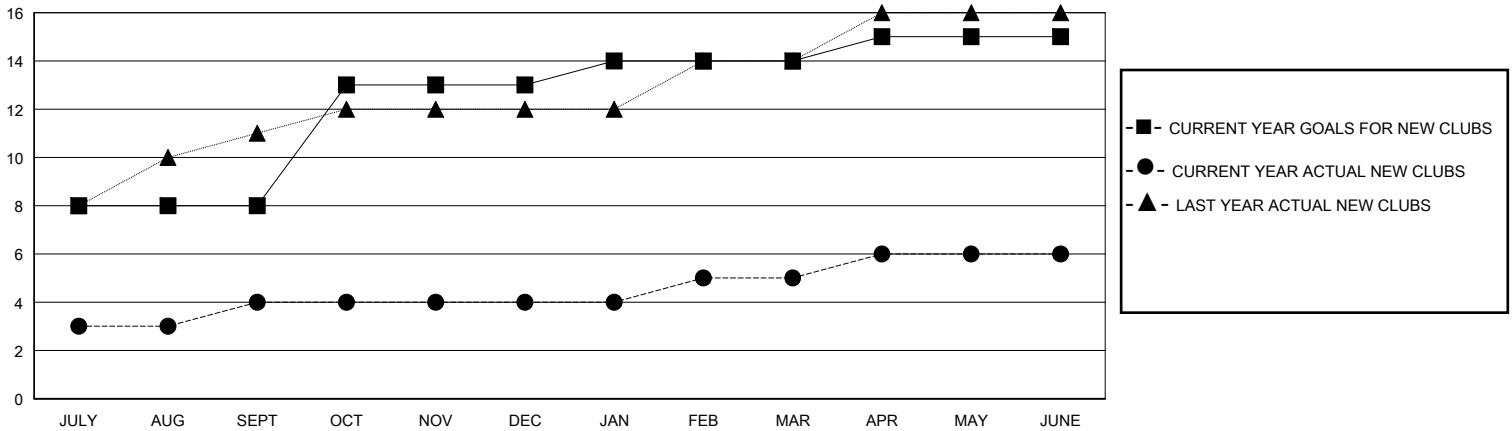
LOCATION INDIA

GMT CA

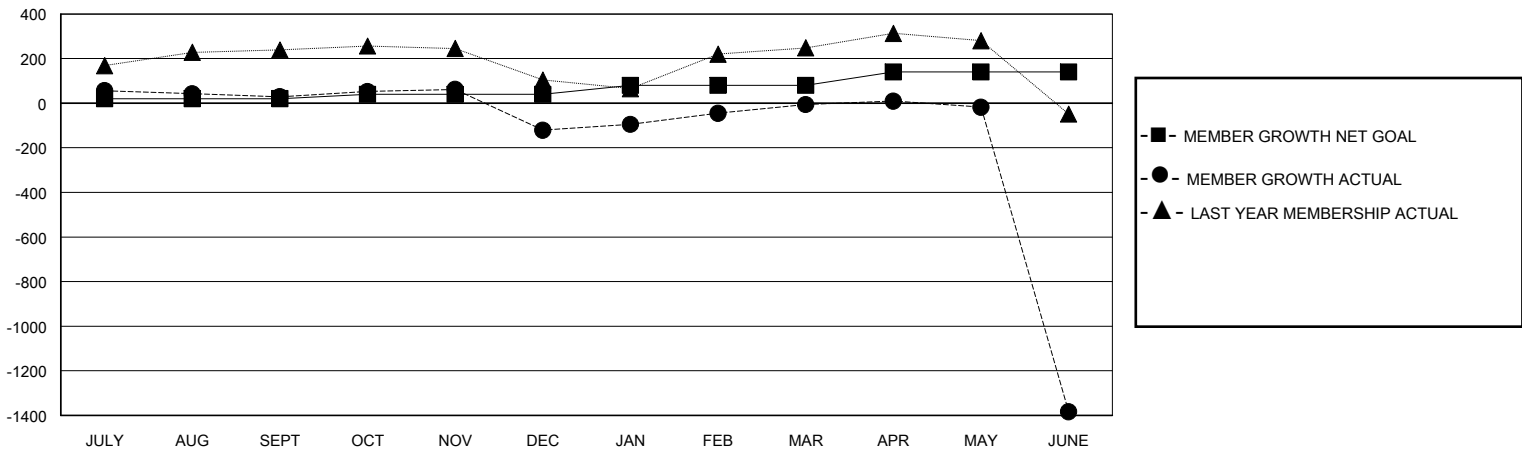
Clubs			
RESULTS FOR 2019-2020			
QUARTER	NEW CLUB GOAL	NEW CLUBS	DROPPED CLUBS
JULY/AUG/SEPT	8	4	0
OCT/NOV/DEC	5	0	4
JAN/FEB/MAR	1	1	0
APR/MAY/JUNE	1	1	0

Members			
RESULTS FOR 2019-2020			
QUARTER	MEMBER GROWTH NET GOAL	MEMBER GROWTH ACTUAL	DROPPED MEMBERS ACTUAL (including transfers)
JULY/AUG/SEPT	20	212	145
OCT/NOV/DEC	20	46	191
JAN/FEB/MAR	40	208	43
APR/MAY/JUNE	60	84	1,437

GOALS AND ACTUAL NEW CLUBS CUMULATIVE



GOALS AND ACTUAL MEMBERS CUMULATIVE



DROPPED CLUBS: 4

78 CLUBS OF 142 ADDED 1 OR MORE NEW MEMBERS

GENDER DISTRIBUTION

MALE 1,947 (72.11%)  
FEMALE 753 (27.89%)

DROPPED MEMBERS

DECEASED	7
CLUB CANCELLED	80
OTHER	1,729
<b>TOTAL</b>	<b>1,816</b>

[CLICK HERE FOR CUMULATIVE MEMBERSHIP DATA](#)

TOTAL FAMILY UNIT MEMBERS	1,524
FAMILY MEMBERS PAYING HALF DUES	825